



2+



2



0,6m



1 = 1,1m
2 = 0,38m
3 = 0,9m



Discapacidad motriz
Discapacidad sensorial
Discapacidad mental



Funciones Lúdicas : 4

imaginar



x1

encontrarse



x1

columpiarse



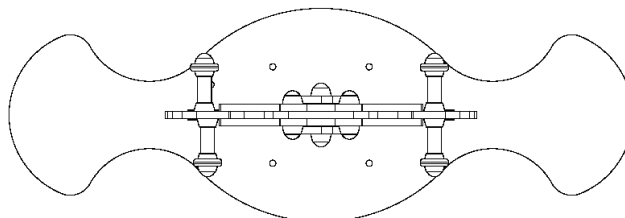
x1

equilibrio





x1



Elementos constituyentes

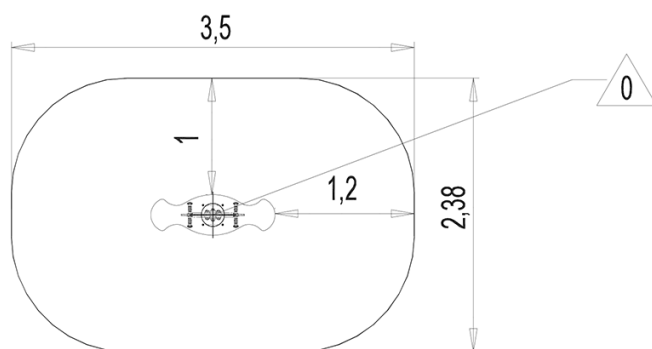


Instalación del equipamiento

Zona de impacto: Superficie de suelo mínima requerida

-  Zona de impacto
-  Espacio libre

1	 0,6m	 7m ²
---	---	--



1



01h00



0m³



7m²



33kg



11kg

